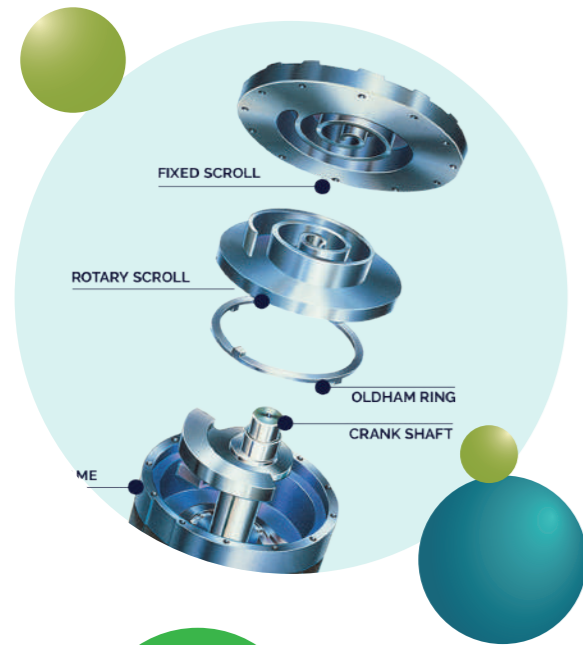




INVERTER CONDENSING UNITS

Expert of High Quality Freezing

HITACHI HIGH PRESSURE CHAMBER SCROLL COMPRESSOR



HIGH SAVING

The Hitachi inverter condensing unit is designed to adjust the RPM of the compressor based on the actual load, allowing it to provide the appropriate output for maximum power savings.

HIGH RELIABILITY

Hitachi scroll compressor adopts high pressure chamber lubrication designed to reduce issues like boiling with bubbles during start-up or rapid frequency changes. This system ensures that only a small amount of lubrication oil enters the system, helping to maintain stable operation in all situations. This feature contributes to the overall high reliability of the compressor.

HIGH CAPACITY

Hitachi scroll compressor adopts medium pressure liquid injection system helps maintain stable discharge temperatures and ensures that the amount of refrigerant remains consistent during compressor suction. This feature helps guarantee a high freezing capacity, making the compressor an efficient and reliable choice for various cooling applications.

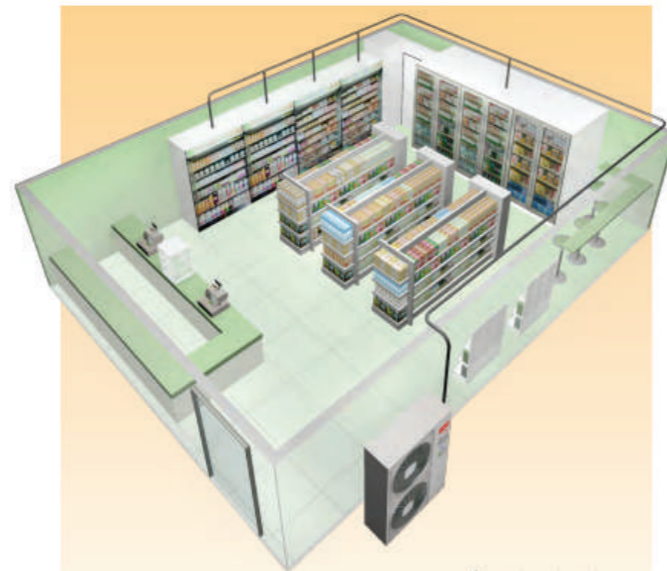


In order to protect the earth, Hitachi condensing unit is the pioneer to adopt R404A environmental friendly refrigerant with zero ODP. Not only R404A, R507A environmental friendly refrigerant also can be used for more flexibility.

SAVING

ENERGY SPACE INSTALLATION

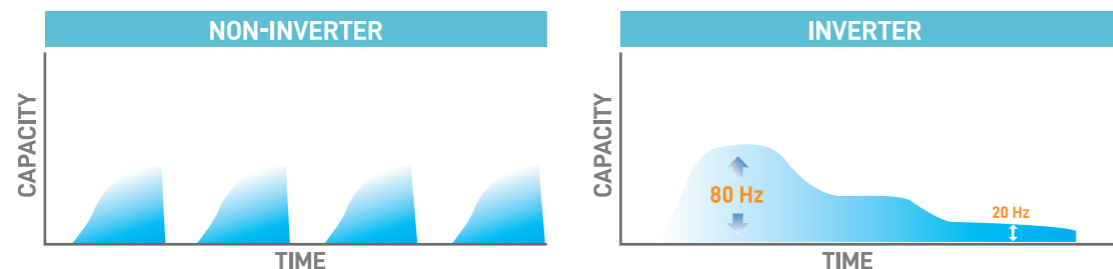
Hitachi inverter condensing unit can lead lower overhead cost



MORE SAVING

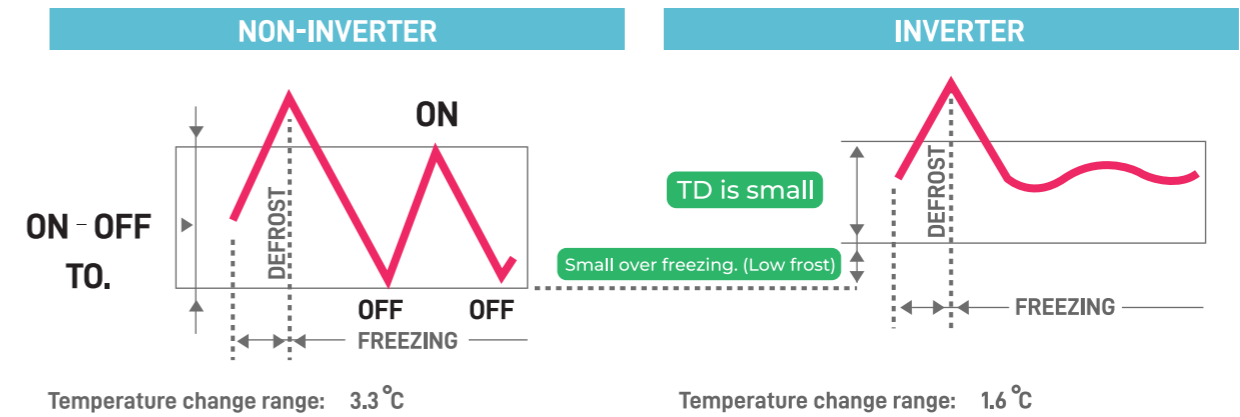
Adjust the running frequency (Hz) automatically based on the load to not only prevent ineffective freezing but also reduce the frequent on/off cycling of the compressor, thereby achieving better power savings.

The running frequency ranges from 20 to 80Hz, which is wider than that of an ordinary non-inverter unit. Even in locations where there are significant fluctuations in load, Hitachi's condensing unit can maintain accurate temperature control and operate efficiently and continuously



HIGH FRESHNESS

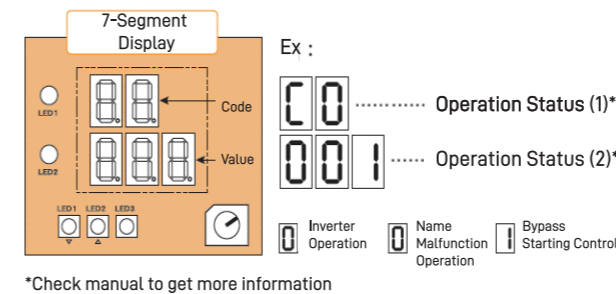
The Hitachi inverter condensing unit can maintain a constant evaporating temperature through 1Hz capacity control. This ensures stable storage temperature and enables high-quality freshness



SMART SELF-DETECTION

Easy to get the operation status The 7-segment display built into the PCB can provide information such as high/low pressure, suction/discharge temperature, running current, frequency, and more. This feature allows for convenient monitoring of the unit's performance

Quick repair of time saving During inspection and maintenance, the 7-segment display can provide error codes along with information on the reason for malfunction, abnormal times and frequency, reason for retry control, and protection control.



*Check manual to get more information

LOW NOISE

Hitachi inverter condensing units feature low operation noise due to the adoption of advanced IPM technology from Japan. This technology helps ensure a quieter operation for enhanced user comfort.

Hitachi inverter condensing unit can automatically switch to low noise operation mode when it's night time or when the outdoor temperature is below 25 degrees. This feature helps reduce noise levels

Category	Hitachi	Others
Compressor Motor	DC inverter with IPM technology	Non-inv. using a third-party inverter module to control the speed of a non-inverter compressor and motor
Motor overheat protection by RPM	Stable and safe operation between wide range 20-85HZ.	The operation range is unclear and the reliability is poor.
Lubrication oil recycle in low frequency operation	Available. Low frequency operation with low power consumption.	None. cannot operate at low frequencies to reduce power consumption.
Rapid freezing in high frequency operation (For new stocks deliver in)	Available. The operation frequency will increase as the suction pressure rises.	The safety of high frequency operation not be certified. The consequent of rapid freezing and the reliability is unknown.
Protect functions	Advanced frequency control to avoid high discharge pressure and temperature over current to make sure stable operation.	not having safety certification and the increase likelihood of malfunctions leading to unit shutdowns

INVERTER MODEL LIST

Type		Model	HP	Evaporating Temp(°C)	
Air-cool	Freeze & Refrigerate	Unity	KX-RD31AV	3	-45 ~ -5
			KX-RD51AV	5	-45 ~ -5
			KX-R81AV	8	-45 ~ -5
			KX-R101AV	10	-45 ~ -5
			KX-R161AV	16	-45 ~ -5
			KX-R201AV	20	-45 ~ -5
	Split	KX-R81CV + RCR-R81SV	8	-45 ~ -5	
		KX-R101CV + RCR-R101SV	10	-45 ~ -5	
		KX-R161CV + RCR-R81SVx2	16	-45 ~ -5	
		KX-R201CV + RCR-R101SVx2	20	-45 ~ -5	
	Refrigerate	Unity	KX-RD51AMV	5	-20 ~ 0
			KX-RD61AMV	6	-20 ~ 0
			KX-RD71AMV	7	-20 ~ 0
			KX-R81AHV	8	-20 ~ 10
KX-R101AHV			10	-20 ~ 10	
KX-R161AHV			16	-20 ~ 5	
KX-R201AHV		20	-20 ~ 5		
Split		KX-R81CHV + RCR-R81SHV	8	-20 ~ 10	
		KX-R101CHV + RCR-R101SHV	10	-20 ~ 10	
		KX-R161CHV + RCR-R81SHVx2	16	-20 ~ 5	
	KX-R201CHV + RCR-R101SHVx2	20	-20 ~ 5		

KX-RD31 AV

Freeze & Refrigerate

Specifications



Item	Model		KX-RD31AV	
Dimension	Width	mm	1122	
	Depth	mm	385	490(With Transformer)
	Height	mm	1285	
Power Supply	-		AC 3, 220V/60Hz	AC 3, 4W, 380V/60Hz
Frequency Range	Hz	20 ~ 60		
Compressor	-		FL500DHD-72A1	FL500DHD-72D1
Running Current	A	11.8	7.0	
Starting Current	A	-		
Power Consumption	kW	4.3	4.2	
Refrigerant Oil	Type	-	FCV32D(Idemitsu)	
	Charge	L	3.0	
Condenser	Type	-	Multi-Pass Cross-Finned Tube	
	Fan Diam.	mm	500x2	
	Flow Rate	CMM	130	117
Condenser Motor	Output	W	125 + 125	125 + 130
	Pole	-	6	
Reservoir Inner Volume	L	10.3		
Refrigerant	-	R404A or R507A(not mix)		
Working Range Temp.	Evaporating	°C	-45 ~ -5	
	O.D.	°C	2 ~ 40	
Protection Devices	-	High Pressure SW · Overcurrent Relay · Compressor Overheat Protector · Fuse · Reverse Phase Protector		
Accessories	-	User's and Service Technical Manual		
Weight	Kg	155	160	
Piping Size	Gas Line	mm	19.05	
	Liquid Line	mm	12.7	

Notice : The above data is based on these conditions
 ·O.D. Temperature 32°C · Evaporating Temperature -15°C
 ·Compressor Inlet Temperature 18°C
 ·Refrigerant R404A

KX-RD51 AV

Freeze & Refrigerate



Specifications

Item		Model		KX-RD51AV	
Dimension	Width	mm	1122		
	Depth	mm	385	490(With Transformer)	
	Height	mm	1285		
Power Supply		-	AC 3, 220V/60Hz	AC 3, 4W, 380V/60Hz	
Frequency Range		Hz	20 ~ 85		
Compressor		-	FL500DHD-72A1	FL500DHD-72D1	
Running Current		A	19.6	10.6	
Starting Current		A	-		
Power Consumption		kW	6.5	6.2	
Refrigerant Oil	Type	-	FCV32D(Idemitsu)		
	Charge	L	3.0		
Condenser	Type	-	Multi-Pass Cross-Finned Tube		
	Fan Diam.	mm	500x2		
	Flow Rate	CMM	121	115	
Condenser Motor	Output	W	125 + 125	125 + 130	
	Pole	-	6		
Reservoir Inner Volume		L	13.5		
Refrigerant		-	R404A or R507A(not mix)		
Working Range Temp.	Evaporating	°C	-45 ~ -5		
	O.D.	°C	2 ~ 40		
Protection Devices		-	High Pressure SW · Overcurrent Relay · Compressor Overheat Protector · Fuse · Reverse Phase Protector		
Accessories		-	User's and Service Technical Manual		
Weight		Kg	170	175	
Piping Size	Gas Line	mm	22		
	Liquid Line	mm	12.7		

Notice : The above data is based on these conditions
 ·O.D. Temperature 32°C · Evaporating Temperature -15°C
 ·Compressor Inlet Temperature 18°C
 ·Refrigerant R404A

KX-RD51 AMV

Refrigerate



Specifications

Item		Model		KX-RD51AMV	
Dimension	Width	mm	950		
	Depth	mm	427	562(With Transformer)	
	Height	mm	1380		
Power Supply		-	AC 3, 220V/60Hz	AC 3, 4W, 380V/60Hz	
Frequency Range		Hz	20 ~ 60		
Compressor		-	FM600DHD-90A1	FM600DHD-90D1	
Running Current		A	12.2	7.8	
Starting Current		A	-		
Power Consumption		kW	4.2	4.36	
Refrigerant Oil	Type	-	FCV32D(Idemitsu)		
	Charge	L	2.4		
Condenser	Type	-	Multi-Pass Cross-Finned Tube		
	Fan Diam.	mm	544x2		
	Flow Rate	CMM	90		
Condenser Motor	Output	W	74x2		
	Pole	-	8		
Reservoir Inner Volume		L	6		
Refrigerant		-	R404A or R507A(not mix)		
Working Range Temp.	Evaporating	°C	-20 ~ 0		
	O.D.	°C	2 ~ 40		
Protection Devices		-	High Pressure SW · Overcurrent Relay · Compressor Overheat Protector · Fuse · Reverse Phase Protector		
Accessories		-	User's and Service Technical Manual		
Weight		Kg	165		
Piping Size	Gas Line	mm	31.75		
	Liquid Line	mm	12.7		

Notice : The above data is based on these conditions
 ·O.D. Temperature 32°C · Evaporating Temperature -10°C
 ·Compressor Inlet Temperature 18°C
 ·Refrigerant R404A



KX-RD61 AMV

Refrigerate

Specifications

Item	Model		KX-RD61AMV	
Dimension	Width	mm	950	
	Depth	mm	427	562(With Transformer)
	Height	mm	1380	
Power Supply	-	AC 3, 220V/60Hz	AC 3, 4W, 380V/60Hz	
Frequency Range	Hz	20 ~ 70		
Compressor	-	FM600DHD-90A1	FM600DHD-90D1	
Running Current	A	16.3	9.2	
Starting Current	A	-		
Power Consumption	kW	5.0	5.08	
Refrigerant Oil	Type	-	FCV32D(Idemitsu)	
	Charge	L	2.4	
Condenser	Type	-	Multi-Pass Cross-Finned Tube	
	Fan Diam.	mm	544x2	
	Flow Rate	CMM	140	
Condenser Motor	Output	W	138x2	
	Pole	-	8	
Reservoir Inner Volume	L	6		
Refrigerant	-	R404A or R507A(not mix)		
Working Range Temp.	Evaporating	°C	-20 ~ 0	
	O.D.	°C	2 ~ 40	
Protection Devices	-	High Pressure SW · Overcurrent Relay · Compressor Overheat Protector · Fuse · Reverse Phase Protector		
Accessories	-	User's and Service Technical Manual		
Weight	Kg	180		
Piping Size	Gas Line	mm	31.75	
	Liquid Line	mm	12.7	

Notice : The above data is based on these conditions
 ·O.D. Temperature 32°C · Evaporating Temperature -10°C
 ·Compressor Inlet Temperature 18°C
 ·Refrigerant R404A



KX-RD71 AMV

Refrigerate

Specifications

Item	Model		KX-RD71AMV	
Dimension	Width	mm	950	
	Depth	mm	427	562(With Transformer)
	Height	mm	1380	
Power Supply	-	AC 3, 220V/60Hz	AC 3, 4W, 380V/60Hz	
Frequency Range	Hz	20 ~ 80		
Compressor	-	FM600DHD-90A1	FM600DHD-90D1	
Running Current	A	17.3	9.7	
Starting Current	A	-		
Power Consumption	kW	5.7	5.54	
Refrigerant Oil	Type	-	FCV32D(Idemitsu)	
	Charge	L	2.4	
Condenser	Type	-	Multi-Pass Cross-Finned Tube	
	Fan Diam.	mm	544x2	
	Flow Rate	CMM	140	
Condenser Motor	Output	W	138x2	
	Pole	-	8	
Reservoir Inner Volume	L	6		
Refrigerant	-	R404A or R507A(not mix)		
Working Range Temp.	Evaporating	°C	-20 ~ 0	
	O.D.	°C	2 ~ 40	
Protection Devices	-	High Pressure SW · Overcurrent Relay · Compressor Overheat Protector · Fuse · Reverse Phase Protector		
Accessories	-	User's and Service Technical Manual		
Weight	Kg	180		
Piping Size	Gas Line	mm	31.75	
	Liquid Line	mm	12.7	

Notice : The above data is based on these conditions
 ·O.D. Temperature 32°C · Evaporating Temperature -10°C
 ·Compressor Inlet Temperature 18°C
 ·Refrigerant R404A



KX-R81 AV

Freeze & Refrigerate

Specifications

Item	Model	KX-R81AV	
Dimension	Width	mm	920
	Depth	mm	830
	Height	mm	1670
Power Supply	-	AC 3, 220V/60Hz	AC 3, 4W, 380V/60Hz
Frequency Range	Hz	25 ~ 70	
Compressor	-	FL800ELV-144A3	FL800ELV-144D3
Running Current	A	32.9	18.8
Starting Current	A	235	116
Power Consumption	kW	12.2	11.0
Refrigerant Oil	Type	FCV32D(Idemitsu)	
	Charge	L	3
Condenser	Type	Multi-Pass Cross-Finned Tube	
	Fan Diam.	mm	644
	Flow Rate	CMM	197
Condenser Motor	Output	W	350
	Pole	-	8
Reservoir Inner Volume	L	27	
Refrigerant	-	R404A or R507A(not mix)	
Working Range Temp.	Evaporating	°C	-45 ~ -5
	O.D.	°C	2 ~ 40
Protection Devices	-	High Pressure SW · Overcurrent Relay · Compressor Overheat Protector · Fuse · Reverse Phase Protector	
Accessories	-	User's and Service Technical Manual	
Weight	Kg	240	
Piping Size	Gas Line	mm	31.75
	Liquid Line	mm	15.88

Notice : The above data is based on these conditions

- O.D. Temperature 32°C · Evaporating Temperature -10°C
- Compressor Inlet Temperature 18°C
- Refrigerant R404A



KX-R101 AV

Freeze & Refrigerate

Specifications

Item	Model	KX-R101AV	
Dimension	Width	mm	920
	Depth	mm	830
	Height	mm	1670
Power Supply	-	AC 3, 220V/60Hz	AC 3, 4W, 380V/60Hz
Frequency Range	Hz	25 ~ 75	
Compressor	-	FL1000ELV-144A3	FL1000ELV-144D3
Running Current	A	36.4	21.3
Starting Current	A	235	116
Power Consumption	kW	13.3	12.3
Refrigerant Oil	Type	FCV32D(Idemitsu)	
	Charge	L	3
Condenser	Type	Multi-Pass Cross-Finned Tube	
	Fan Diam.	mm	644
	Flow Rate	CMM	197
Condenser Motor	Output	W	350
	Pole	-	8
Reservoir Inner Volume	L	27	
Refrigerant	-	R404A or R507A(not mix)	
Working Range Temp.	Evaporating	°C	-45 ~ -5
	O.D.	°C	2 ~ 40
Protection Devices	-	High Pressure SW · Overcurrent Relay · Compressor Overheat Protector · Fuse · Reverse Phase Protector	
Accessories	-	User's and Service Technical Manual	
Weight	Kg	240	
Piping Size	Gas Line	mm	31.75
	Liquid Line	mm	15.88

Notice : The above data is based on these conditions

- O.D. Temperature 32°C · Evaporating Temperature -10°C
- Compressor Inlet Temperature 18°C
- Refrigerant R404A

KX-R161 AV

Freeze & Refrigerate

Specifications



Item	Model	KX-R161AV		
Dimension	Width	mm	1850	
	Depth	mm	830	
	Height	mm	1670	
Power Supply	-	AC 3, 220V/60Hz	AC 3, 4W, 380V/60Hz	
Frequency Range	Hz	(Inv.)25 ~ 70+(Non-Inv.)60Hz		
Compressor	Inverter	-	FL800ELV-144A3	FL800ELV-144D3
	Non-Inverter	-	FL800EL-144A3	FL1000EL-144C3
Running Current	A	61.6	38.5	
Starting Current	A	222.7	135.8	
Power Consumption	kW	22.4		
Refrigerant Oil	Type	-	FCV32D(Idemitsu)	
	Charge	L	16.0	
Condenser	Type	-	Multi-Pass Cross-Finned Tube	
	Fan Diam.	mm	644x2	
	Flow Rate	CMM	525	
Condenser Motor	Output	W	350x2	
	Pole	-	8	
Reservoir Inner Volume	L	50		
Refrigerant	-	R404A or R507A(not mix)		
Working Range Temp.	Evaporating	°C	-45 ~ -5	
	O.D.	°C	2 ~ 40	
Protection Devices	-	High Pressure SW · Overcurrent Relay · Compressor Overheat Protector · Fuse · Reverse Phase Protector		
Accessories	-	User's and Service Technical Manual		
Weight	Kg	540		
Piping Size	Gas Line	mm	44.45(Flange)	
	Liquid Line	mm	22(Nut)	

Notice : The above data is based on these conditions

- O.D. Temperature 32°C · Evaporating Temperature -10°C
- Compressor Inlet Temperature 18°C
- Refrigerant R404A

KX-R201 AV

Freeze & Refrigerate

Specifications



Item	Model	KX-R201AV		
Dimension	Width	mm	1850	
	Depth	mm	830	
	Height	mm	1670	
Power Supply	-	AC 3, 220V/60Hz	AC 3, 4W, 380V/60Hz	
Frequency Range	Hz	(Inv.)25 ~ 75+(Non-Inv.)60Hz		
Compressor	Inverter	-	FL1000ELV-144A3	FL1000ELV-144D3
	Non-Inverter	-	FL1000EL-180A3	FL1000EL-180C3
Running Current	A	77.7	44.0	
Starting Current	A	245.0	142.0	
Power Consumption	kW	26.1		
Refrigerant Oil	Type	-	FCV32D(Idemitsu)	
	Charge	L	16.0	
Condenser	Type	-	Multi-Pass Cross-Finned Tube	
	Fan Diam.	mm	644x2	
	Flow Rate	CMM	525	
Condenser Motor	Output	W	350x2	
	Pole	-	8	
Reservoir Inner Volume	L	50		
Refrigerant	-	R404A or R507A(not mix)		
Working Range Temp.	Evaporating	°C	-45 ~ -5	
	O.D.	°C	2 ~ 40	
Protection Devices	-	High Pressure SW · Overcurrent Relay · Compressor Overheat Protector · Fuse · Reverse Phase Protector		
Accessories	-	User's and Service Technical Manual		
Weight	Kg	540		
Piping Size	Gas Line	mm	44.45(Flange)	
	Liquid Line	mm	22(Nut)	

Notice : The above data is based on these conditions

- O.D. Temperature 32°C · Evaporating Temperature -10°C
- Compressor Inlet Temperature 18°C
- Refrigerant R404A



KX-R81 AHV

Refrigerate

Specifications

Item	Model		KX-R81AHV	
Dimension	Width	mm	920	
	Depth	mm	830	
	Height	mm	1670	
Power Supply	-	AC 3, 220V/60Hz	AC 3, 4W, 380V/60Hz	
Frequency Range	Hz	25 ~ 60		
Compressor	-	FL800ELV-144A3	FL800ELV-144D3	
Running Current	A	30.6	17.3	
Starting Current	A	235	116	
Power Consumption	kW	11.2	10.1	
Refrigerant Oil	Type	-	FCV32D(Idemitsu)	
	Charge	L	3	
Condenser	Type	-	Multi-Pass Cross-Finned Tube	
	Fan Diam.	mm	644	
	Flow Rate	CMM	187	
Condenser Motor	Output	W	350	
	Pole	-	8	
Reservoir Inner Volume	L	27		
Refrigerant	-	R404A or R507A(not mix)		
Working Range Temp.	Evaporating	°C	-20 ~ 10	
	O.D.	°C	2 ~ 40	
Protection Devices	-	High Pressure SW · Overcurrent Relay · Compressor Overheat Protector · Fuse · Reverse Phase Protector		
Accessories	-	User's and Service Technical Manual		
Weight	Kg	250		
Piping Size	Gas Line	mm	31.75	
	Liquid Line	mm	15.88	

Notice : The above data is based on these conditions

- O.D. Temperature 32°C · Evaporating Temperature 0°C
- Compressor Inlet Temperature 18°C
- Refrigerant R404A



KX-R101 AHV

Refrigerate

Specifications

Item	Model		KX-R101AHV	
Dimension	Width	mm	920	
	Depth	mm	830	
	Height	mm	1670	
Power Supply	-	AC 3, 220V/60Hz	AC 3, 4W, 380V/60Hz	
Frequency Range	Hz	25 ~ 65		
Compressor	-	FL1000ELV-144A3	FL1000ELV-144D3	
Running Current	A	34.0	18.6	
Starting Current	A	235	116	
Power Consumption	kW	12.2	11.4	
Refrigerant Oil	Type	-	FCV32D(Idemitsu)	
	Charge	L	3	
Condenser	Type	-	Multi-Pass Cross-Finned Tube	
	Fan Diam.	mm	644	
	Flow Rate	CMM	187	
Condenser Motor	Output	W	350	
	Pole	-	8	
Reservoir Inner Volume	L	27		
Refrigerant	-	R404A or R507A(not mix)		
Working Range Temp.	Evaporating	°C	-20 ~ 10	
	O.D.	°C	2 ~ 40	
Protection Devices	-	High Pressure SW · Overcurrent Relay · Compressor Overheat Protector · Fuse · Reverse Phase Protector		
Accessories	-	User's and Service Technical Manual		
Weight	Kg	250		
Piping Size	Gas Line	mm	31.75	
	Liquid Line	mm	15.88	

Notice : The above data is based on these conditions

- O.D. Temperature 32°C · Evaporating Temperature 0°C
- Compressor Inlet Temperature 18°C
- Refrigerant R404A

KX-R161 AHV

Refrigerate

Specifications



Item	Model	KX-R161AHV		
Dimension	Width	mm	1850	
	Depth	mm	830	
	Height	mm	1670	
Power Supply	-	AC 3, 220V/60Hz	AC 3, 4W, 380V/60Hz	
Frequency Range	Hz	(Inv.)25 ~ 60+(Non-Inv.)60Hz		
Compressor	Inverter	-	FL800ELV-144A3	FL800ELV-144D3
	Non-Inverter	-	FM750EL-128A4	FM750EL-128C4
Running Current	A	59.7	35.0	
Starting Current	A	225	127.8	
Power Consumption	kW	21.1		
Refrigerant Oil	Type	-	FCV32D(Idemitsu)	
	Charge	L	16.0	
Condenser	Type	-	Multi-Pass Cross-Finned Tube	
	Fan Diam.	mm	644x2	
	Flow Rate	CMM	570	
Condenser Motor	Output	W	350x2	
	Pole	-	8	
Reservoir Inner Volume	L	50		
Refrigerant	-	R404A or R507A(not mix)		
Working Range Temp.	Evaporating	°C	-20 ~ -5	
	O.D.	°C	2 ~ 40	
Protection Devices	-	High Pressure SW · Overcurrent Relay · Compressor Overheat Protector · Fuse · Reverse Phase Protector		
Accessories	-	User's and Service Technical Manual		
Weight	Kg	570		
Piping Size	Gas Line	mm	44.45(Flange)	
	Liquid Line	mm	22(Nut)	

Notice : The above data is based on these conditions

- O.D. Temperature 32°C · Evaporating Temperature 0°C
- Compressor Inlet Temperature 18°C
- Refrigerant R404A

KX-R201 AHV

Refrigerate

Specifications



Item	Model	KX-R201AHV		
Dimension	Width	mm	1850	
	Depth	mm	830	
	Height	mm	1670	
Power Supply	-	AC 3, 220V/60Hz	AC 3, 4W, 380V/60Hz	
Frequency Range	Hz	(Inv.)25 ~ 65+(Non-Inv.)60Hz		
Compressor	Inverter	-	FL1000ELV-144A3	FL1000ELV-144D3
	Non-Inverter	-	FL800EL-144A4	FL800EL-144C3
Running Current	A	69.2	40.8	
Starting Current	A	245.0	139.0	
Power Consumption	kW	22.0		
Refrigerant Oil	Type	-	FCV32D(Idemitsu)	
	Charge	L	16.0	
Condenser	Type	-	Multi-Pass Cross-Finned Tube	
	Fan Diam.	mm	644x2	
	Flow Rate	CMM	570	
Condenser Motor	Output	W	350x2	
	Pole	-	8	
Reservoir Inner Volume	L	50		
Refrigerant	-	R404A or R507A(not mix)		
Working Range Temp.	Evaporating	°C	-20 ~ 5	
	O.D.	°C	2 ~ 40	
Protection Devices	-	High Pressure SW · Overcurrent Relay · Compressor Overheat Protector · Fuse · Reverse Phase Protector		
Accessories	-	User's and Service Technical Manual		
Weight	Kg	570		
Piping Size	Gas Line	mm	44.45(Flange)	
	Liquid Line	mm	22(Nut)	

Notice : The above data is based on these conditions

- O.D. Temperature 32°C · Evaporating Temperature 0°C
- Compressor Inlet Temperature 18°C
- Refrigerant R404A

KX-R81 CV + RCR-R81SV

Freeze & Refrigerate



Specifications(Compressor Assembly) 【Indoor Installation Type】

Item		Model		KX-R81CV	
Dimension	W x D x H	mm	1650 x 600 x 630		
Power Supply		-	AC 3, 220V/60Hz	AC 3, 4W, 380V/60Hz	
Frequency Range		Hz	25 ~ 70		
Compressor		-	FL800ELV-144A3	FL800ELV-144D3	
Running Current		A	32.9	18.8	
Starting Current		A	235	116	
Power Consumption		kW	12.2	11.0	
Refrigerant Oil	Type	-	FCV32D(Idemitsu)		
	Charge	L	3.0		
Refrigerant		-	R404A or R507A(not mix)		
Evaporating Temperature		°C	-45 ~ -5		
Protection Devices		-	High Pressure SW · Overcurrent Relay · Compressor Overheat Protector · Reverse Phase Protector		
Accessories		-	User's and Service Technical Manual		
Weight		Kg	180		
Piping Size	Gas Line Inlet	mm	31.75(Brazing)		
	Gas Line Outlet	mm	19.05(Nut)		
	Liquid Line Inlet	mm	15.88(Nut)		
	Liquid Line Outlet	mm	15.88(Nut)		

Specifications(Condenser Assembly)

Item		Model		RCR-R81SV	
Dimension	W x D x H	mm	1100 x 390 x 1650		
Power Supply		-	AC 1, 220V/60Hz		
Condenser	Type	-	Multi-Pass Cross-Finned Tube		
	Fan Diam.	mm	544x2		
	Flow Rate	CMM	163		
Condenser Motor	Output	W	140+175		
	Pole	-	6		
Reservoir Inner Volume		L	13.5		
O.D. Working Range Temp.		°C	2 ~ 43		
Weight		Kg	120		
Piping Size	Gas Line Inlet	mm	19.05(Nut)		
	Gas Line Outlet	mm	-		
	Liquid Line Inlet	mm	-		
	Liquid Line Outlet	mm	15.88(Nut)		

Notice : The above data is based on these conditions
 ·O.D. Temperature 32°C · Evaporating Temperature -10°C
 ·Compressor Inlet Temperature 18°C
 ·Refrigerant R404A

KX-R101 CV + RCR-R101SV

Freeze & Refrigerate



Specifications(Compressor Assembly) 【Indoor Installation Type】

Item		Model		KX-R101CV	
Dimension	W x D x H	mm	1650 x 600 x 630		
Power Supply		-	AC 3, 220V/60Hz	AC 3, 4W, 380V/60Hz	
Frequency Range		Hz	25 ~ 75		
Compressor		-	FL1000ELV-144A3	FL1000ELV-144D3	
Running Current		A	36.4	21.3	
Starting Current		A	235	116	
Power Consumption		kW	13.3	12.3	
Refrigerant Oil	Type	-	FCV32D(Idemitsu)		
	Charge	L	3		
Refrigerant		-	R404A or R507A(not mix)		
Evaporating Temperature		°C	-45 ~ -5		
Protection Devices		-	High Pressure SW · Overcurrent Relay · Compressor Overheat Protector · Reverse Phase Protector		
Accessories		-	User's and Service Technical Manual		
Weight		Kg	180		
Piping Size	Gas Line Inlet	mm	31.75(Brazing)		
	Gas Line Outlet	mm	19.05(Nut)		
	Liquid Line Inlet	mm	15.88(Nut)		
	Liquid Line Outlet	mm	15.88(Nut)		

Specifications(Condenser Assembly)

Item		Model		RCR-R101SV	
Dimension	W x D x H	mm	1100 x 390 x 1650		
Power Supply		-	AC 1, 220V/60Hz		
Condenser	Type	-	Multi-Pass Cross-Finned Tube		
	Fan Diam.	mm	544x2		
	Flow Rate	CMM	163		
Condenser Motor	Output	W	140+175		
	Pole	-	6		
Reservoir Inner Volume		L	13.5		
O.D. Working Range Temp.		°C	2 ~ 43		
Weight		Kg	120		
Piping Size	Gas Line Inlet	mm	19.05(Nut)		
	Gas Line Outlet	mm	-		
	Liquid Line Inlet	mm	-		
	Liquid Line Outlet	mm	15.88(Nut)		

Notice : The above data is based on these conditions
 ·O.D. Temperature 32°C · Evaporating Temperature -10°C
 ·Compressor Inlet Temperature 18°C
 ·Refrigerant R404A

KX-R161 CV + RCR-R81SVX2

Freeze & Refrigerate



Specifications(Compressor Assembly) 【Indoor Installation Type】

Item		Model	KX-R161CV	
Dimension	W x D x H	mm	1800 x 976 x 886	
Power Supply		-	AC 3, 220V/60Hz	AC 3, 4W, 380V/60Hz
Frequency Range		Hz	(Inv.)25 ~ 70+(Non-Inv.)60Hz	
Compressor	Inverter	-	FL800ELV-144A3	FL800ELV-144D3
	Non-Inverter	-	FL800EL-144A3	FL800EL-144C7
Running Current		A	61.6	38.5
Starting Current		A	222.7	135.8
Power Consumption		kW	22.4	
Refrigerant Oil	Type	-	FCV32D(Idemitsu)	
	Charge	L	16.0	
Refrigerant		-	R404A or R507A(not mix)	
Evaporating Temperature		°C	-45 ~ -5	
Protection Devices		-	High Pressure SW · Overcurrent Relay · Compressor Overheat Protector · Reverse Phase Protector	
Accessories		-	User's and Service Technical Manual	
Weight		Kg	375	
Piping Size	Gas Line Inlet	mm	44.45(Brazing)	
	Gas Line Outlet	mm	31.75(Brazing)	
	Liquid Line Inlet	mm	22.0(Brazing)	
	Liquid Line Outlet	mm	22.0(Brazing)	

Specifications(Condenser Assembly)

Item		Model	RCR-R81SV	
Dimension	W x D x H	mm	1100 x 390 x 1650	
Power Supply		-	AC 1, 220V/60Hz	
Condenser	Type	-	Multi-Pass Cross-Finned Tube	
	Fan Diam.	mm	544x2	
	Flow Rate	CMM	163	
Condenser Motor	Output	W	140+175	
	Pole	-	6	
Reservoir Inner Volume		L	13.5	
O.D. Working Range Temp.		°C	2 ~ 43	
Weight		Kg	120	
Piping Size	Gas Line Inlet	mm	19.05(Nut)	
	Gas Line Outlet	mm	-	
	Liquid Line Inlet	mm	-	
	Liquid Line Outlet	mm	15.88(Nut)	

Notice : The above data is based on these conditions
 ·O.D. Temperature 32°C · Evaporating Temperature -10°C
 ·Compressor Inlet Temperature 18°C
 ·Refrigerant R404A

KX-R201 CV + RCR-101SVX2

Freeze & Refrigerate



Specifications(Compressor Assembly) 【Indoor Installation Type】

Item		Model	KX-R201CV	
Dimension	W x D x H	mm	1800 x 976 x 886	
Power Supply		-	AC 3, 220V/60Hz	AC 3, 4W, 380V/60Hz
Frequency Range		Hz	(Inv.)25 ~ 75+(Non-Inv.)60Hz	
Compressor	Inverter	-	FL1000ELV-144A3	FL1000ELV-144D3
	Non-Inverter	-	FL1000EL-180A3	FL1000EL-180C3
Running Current		A	77.7	44.0
Starting Current		A	245.0	142.0
Power Consumption		kW	26.1	
Refrigerant Oil	Type	-	FCV32D(Idemitsu)	
	Charge	L	16.0	
Refrigerant		-	R404A or R507A(not mix)	
Evaporating Temperature		°C	-45 ~ -5	
Protection Devices		-	High Pressure SW · Overcurrent Relay · Compressor Overheat Protector · Reverse Phase Protector	
Accessories		-	User's and Service Technical Manual	
Weight		Kg	375	
Piping Size	Gas Line Inlet	mm	44.45(Brazing)	
	Gas Line Outlet	mm	31.75(Brazing)	
	Liquid Line Inlet	mm	22.0(Brazing)	
	Liquid Line Outlet	mm	22.0(Brazing)	

Specifications(Condenser Assembly)

Item		Model	RCR-R101SV	
Dimension	W x D x H	mm	1100 x 390 x 1650	
Power Supply		-	AC 1, 220V/60Hz	
Condenser	Type	-	Multi-Pass Cross-Finned Tube	
	Fan Diam.	mm	544x2	
	Flow Rate	CMM	163	
Condenser Motor	Output	W	140+175	
	Pole	-	6	
Reservoir Inner Volume		L	13.5	
O.D. Working Range Temp.		°C	2 ~ 43	
Weight		Kg	120	
Piping Size	Gas Line Inlet	mm	19.05(Nut)	
	Gas Line Outlet	mm	-	
	Liquid Line Inlet	mm	-	
	Liquid Line Outlet	mm	15.88(Nut)	

Notice : The above data is based on these conditions
 ·O.D. Temperature 32°C · Evaporating Temperature -10°C
 ·Compressor Inlet Temperature 18°C
 ·Refrigerant R404A

KX-R81 CHV + RCR-R81SHV

Refrigerate



Specifications(Compressor Assembly) 【Indoor Installation Type】

Item		Model		KX-R81 CHV	
Dimension	W x D x H	mm	1650 x 600 x 630		
Power Supply	-	AC 3, 220V/60Hz	AC 3, 4W, 380V/60Hz		
Frequency Range	Hz	25 ~ 60			
Compressor	-	FL800ELV-144A3	FL800ELV-144D3		
Running Current	A	30.6	17.3		
Starting Current	A	235	116		
Power Consumption	kW	11.2	10.1		
Refrigerant Oil	Type	-	FCV32D(Idemitsu)		
	Charge	L	3.0		
Refrigerant	-	R404A or R507A(not mix)			
Evaporating Temperature	°C	-20 ~ 10			
Protection Devices	-	High Pressure SW · Overcurrent Relay · Compressor Overheat Protector · Reverse Phase Protector			
Accessories	-	User's and Service Technical Manual			
Weight	Kg	180			
Piping Size	Gas Line Inlet	mm	31.75(Brazing)		
	Gas Line Outlet	mm	19.05(Nut)		
	Liquid Line Inlet	mm	15.88(Nut)		
	Liquid Line Outlet	mm	15.88(Nut)		

Specifications(Condenser Assembly)

Item		Model		RCR-R81SHV	
Dimension	W x D x H	mm	1100 x 390 x 1650		
Power Supply	-	AC 1, 220V/60Hz			
Condenser	Type	-	Multi-Pass Cross-Finned Tube		
	Fan Diam.	mm	544x2		
	Flow Rate	CMM	163		
Condenser Motor	Output	W	140+175		
	Pole	-	6		
Reservoir Inner Volume	L	13.5			
O.D. Working Range Temp.	°C	2 ~ 43			
Weight	Kg	120			
Piping Size	Gas Line Inlet	mm	19.05(Nut)		
	Gas Line Outlet	mm	-		
	Liquid Line Inlet	mm	-		
	Liquid Line Outlet	mm	15.88(Nut)		

Notice : The above data is based on these conditions
 ·O.D. Temperature 32°C · Evaporating Temperature -10°C
 ·Compressor Inlet Temperature 18°C
 ·Refrigerant R404A

KX-R101 CHV + RCR-R101SHV

Refrigerate



Specifications(Compressor Assembly) 【Indoor Installation Type】

Item		Model		KX-R101 CHV	
Dimension	W x D x H	mm	1650 x 600 x 630		
Power Supply	-	AC 3, 220V/60Hz	AC 3, 4W, 380V/60Hz		
Frequency Range	Hz	25 ~ 65			
Compressor	-	FL1000ELV-144A3	FL1000ELV-144D3		
Running Current	A	34.0	18.6		
Starting Current	A	235	116		
Power Consumption	kW	12.2	11.4		
Refrigerant Oil	Type	-	FCV32D(Idemitsu)		
	Charge	L	3.0		
Refrigerant	-	R404A or R507A(not mix)			
Evaporating Temperature	°C	-20 ~ 10			
Protection Devices	-	High Pressure SW · Overcurrent Relay · Compressor Overheat Protector · Reverse Phase Protector			
Accessories	-	User's and Service Technical Manual			
Weight	Kg	180			
Piping Size	Gas Line Inlet	mm	31.75(Brazing)		
	Gas Line Outlet	mm	19.05(Nut)		
	Liquid Line Inlet	mm	15.88(Nut)		
	Liquid Line Outlet	mm	15.88(Nut)		

Specifications(Condenser Assembly)

Item		Model		RCR-R101SHV	
Dimension	W x D x H	mm	1100 x 390 x 1650		
Power Supply	-	AC 1, 220V/60Hz			
Condenser	Type	-	Multi-Pass Cross-Finned Tube		
	Fan Diam.	mm	544x2		
	Flow Rate	CMM	163		
Condenser Motor	Output	W	140+175		
	Pole	-	6		
Reservoir Inner Volume	L	13.5			
O.D. Working Range Temp.	°C	2 ~ 43			
Weight	Kg	120			
Piping Size	Gas Line Inlet	mm	19.05(Nut)		
	Gas Line Outlet	mm	-		
	Liquid Line Inlet	mm	-		
	Liquid Line Outlet	mm	15.88(Nut)		

Notice : The above data is based on these conditions
 ·O.D. Temperature 32°C · Evaporating Temperature -10°C
 ·Compressor Inlet Temperature 18°C
 ·Refrigerant R404A

KX-R161 CHV + RCR-R81SHVX2

Refrigerate

Specifications(Compressor Assembly)
【Indoor Installation Type】



Item	Model	KX-R161CHV	
Dimension	W x D x H	mm 1800 x 976 x 886	
Power Supply	-	AC 3, 220V/60Hz	AC 3, 4W, 380V/60Hz
Frequency Range	Hz	(Inv.)25 ~ 60+(Non-Inv.)60Hz	
Compressor	Inverter	-	FL800ELV-144A3
	Non-Inverter	-	FL800ELV-144D3
Running Current	A	59.7	35.0
Starting Current	A	225.0	127.8
Power Consumption	kW	2.1	
Refrigerant Oil	Type	- FCV32D(Idemitsu)	
	Charge	L	16.0
Refrigerant	-	R404A or R507A(not mix)	
Evaporating Temperature	°C	-20 ~ -5	
Protection Devices	-	High Pressure SW · Overcurrent Relay · Compressor Overheat Protector · Reverse Phase Protector	
Accessories	-	User's and Service Technical Manual	
Weight	Kg	375	
Piping Size	Gas Line Inlet	mm	44.45(Brazing)
	Gas Line Outlet	mm	31.75(Brazing)
	Liquid Line Inlet	mm	22.0(Brazing)
	Liquid Line Outlet	mm	22.0(Brazing)

Specifications(Condenser Assembly)

Item	Model	RCR-R81SHV	
Dimension	W x D x H	mm 1100 x 390 x 1650	
Power Supply	-	AC 1, 220V/60Hz	
Condenser	Type	- Multi-Pass Cross-Finned Tube	
	Fan Diam.	mm	544x2
	Flow Rate	CMM	163
Condenser Motor	Output	W	140+175
	Pole	-	6
Reservoir Inner Volume	L	13.5	
O.D. Working Range Temp.	°C	2 ~ 43	
Weight	Kg	120	
Piping Size	Gas Line Inlet	mm	19.05(Nut)
	Gas Line Outlet	mm	-
	Liquid Line Inlet	mm	-
	Liquid Line Outlet	mm	15.88(Nut)

Notice : The above data is based on these conditions
 ·O.D. Temperature 32°C · Evaporating Temperature -10°C
 ·Compressor Inlet Temperature 18°C
 ·Refrigerant R404A

KX-R201 CHV + RCR-R101SHVX2

Refrigerate

Specifications(Compressor Assembly)
【Indoor Installation Type】



Item	Model	KX-R201CHV	
Dimension	W x D x H	mm 1800 x 976 x 886	
Power Supply	-	AC 3, 220V/60Hz	AC 3, 4W, 380V/60Hz
Frequency Range	Hz	(Inv.)25 ~ 65+(Non-Inv.)60Hz	
Compressor	Inverter	-	FL1000ELV-144A3
	Non-Inverter	-	FL1000ELV-144D3
Running Current	A	69.2	40.8
Starting Current	A	245.0	139.0
Power Consumption	kW	22.0	
Refrigerant Oil	Type	- FCV32D(Idemitsu)	
	Charge	L	16.0
Refrigerant	-	R404A or R507A(not mix)	
Evaporating Temperature	°C	-20 ~ -5	
Protection Devices	-	High Pressure SW · Overcurrent Relay · Compressor Overheat Protector · Reverse Phase Protector	
Accessories	-	User's and Service Technical Manual	
Weight	Kg	375	
Piping Size	Gas Line Inlet	mm	44.45(Brazing)
	Gas Line Outlet	mm	31.75(Brazing)
	Liquid Line Inlet	mm	22.0(Brazing)
	Liquid Line Outlet	mm	22.0(Brazing)

Specifications(Condenser Assembly)

Item	Model	RCR-R101SHV	
Dimension	W x D x H	mm 1100 x 390 x 1650	
Power Supply	-	AC 1, 220V/60Hz	
Condenser	Type	- Multi-Pass Cross-Finned Tube	
	Fan Diam.	mm	544x2
	Flow Rate	CMM	163
Condenser Motor	Output	W	140+175
	Pole	-	6
Reservoir Inner Volume	L	13.5	
O.D. Working Range Temp.	°C	2 ~ 43	
Weight	Kg	120	
Piping Size	Gas Line Inlet	mm	19.05(Nut)
	Gas Line Outlet	mm	-
	Liquid Line Inlet	mm	-
	Liquid Line Outlet	mm	15.88(Nut)

Notice : The above data is based on these conditions
 ·O.D. Temperature 32°C · Evaporating Temperature -10°C
 ·Compressor Inlet Temperature 18°C
 ·Refrigerant R404A

Capacity Table (60Hz)

MODE	CAPACITY	REFRIGERANT	O.D. Temp	Frequency Hz	Evaporating Temperature										
					-45	-40	-35	-30	-25	-20	-15	-10	-5	-0	
KX-RD31AV	kW	R404A R507A	32°C	60	2.6	3.2	3.9	4.8	5.8	7.0	8.5	9.9	11.7	-	
	kcal/hr				2,220	2,760	3,390	4,160	4,990	6,040	7,300	8,550	10,100	-	
KX-RD51AV	kW				3.4	4.2	5.3	6.6	7.9	9.4	11.3	13.2	15.4	-	
	kcal/hr				2,950	3,630	4,590	5,670	6,780	8,120	9,680	11,330	13,250	-	
KX-RD51AMV	kW				-	-	-	-	-	9.8	11.9	14.2	16.4	18.7	
	kcal/hr				-	-	-	-	-	8,400	10,260	12,180	14,140	16,100	
KX-RD61AMV	kW			-	-	-	-	-	11.4	13.8	16.3	18.8	21.2		
	kcal/hr			-	-	-	-	-	9,800	11,840	14,050	16,160	18,260		
KX-RD71AMV	kW			-	-	-	-	-	12.9	15.7	18.5	21.5	24.6		
	kcal/hr			-	-	-	-	-	11,080	13,540	15,880	18,460	21,170		

Notice : This table is based on these conditions

- Suction Temperature of Compressor 18°C
- R404A Refrigerant

Capacity Table (60Hz)

MODE	CAPACITY	REFRIGERANT	OD Temp	Frequency Hz	Evaporating Temperature												
					-45	-40	-35	-30	-25	-20	-15	-10	-5	-0	5	10	
KX-R81AV	kW	R404A R507A	32°C	70	5.2	6.5	8.0	9.8	11.9	14.3	17.0	20.0	23.3	-	-	-	
	kcal/hr				4,460	5,550	6,840	8,400	10,240	12,300	14,620	17,200	20,040	-	-	-	
KX-R101AV	kW				5.7	7.3	9.4	11.6	14.1	16.9	19.7	22.9	26.4	-	-	-	
	kcal/hr				4,930	6,290	8,070	10,010	12,100	14,510	16,940	19,690	22,690	-	-	-	
KX-R161AV	kW				70(INV) + 60(NON-INV)	9.8	12.5	15.6	19.2	23.3	27.9	33.0	38.5	44.5	-	-	-
	kcal/hr				8,430	10,750	13,420	16,510	20,040	24,000	28,380	33,110	38,270	-	-	-	
KX-R201AV	kW			75(INV) + 60(NON-INV)	12.3	15.0	18.5	22.6	27.4	32.7	38.8	45.1	52.7	-	-	-	
	kcal/hr			10,580	12,900	15,910	19,440	23,570	28,120	33,370	38,800	45,320	-	-	-		
KX-R81AHV	kW			60	-	-	-	-	-	13.7	16.2	19.1	22.3	25.3	28.5	31.7	
	kcal/hr			-	-	-	-	-	-	11,790	13,940	16,430	19,180	21,760	24,510	27,270	
KX-R101AHV	kW			65	-	-	-	-	-	14.8	17.6	20.7	24.1	27.5	30.9	34.4	
	kcal/hr			-	-	-	-	-	-	12,730	15,140	17,800	20,730	23,650	26,580	29,590	
KX-R161AHV	kW	60(INV) + 60(NON-INV)	-	-	-	-	-	27.9	33.0	38.5	44.5	45.9	51.7	-			
	kcal/hr	-	-	-	-	-	-	24,000	28,380	33,110	38,270	39,480	44,460	-			
KX-R201AHV	kW	65(INV) + 60(NON-INV)	-	-	-	-	-	32.7	38.8	45.4	50.7	52.7	57.2	-			
	kcal/hr	-	-	-	-	-	-	28,120	33,370	39,050	43,600	45,320	49,190	-			

Notice : This table is based on these conditions

- Suction Temperature of Compressor 18°C
- R404A Refrigerant

Capacity Table (60Hz)

MODE	CAPACITY	REFRIGERANT	OD Temp	Frequency Hz	Evaporating Temperature													
					-45	-40	-35	-30	-25	-20	-15	-10	-5	-0	5	10		
KX-R81CV+ RCR-R81SV	kW	R404A R507A	32°C	70	5.2	6.5	8.0	9.8	11.9	14.3	17.0	20.0	23.3	-	-	-		
	kcal/hr				4,460	5,550	6,840	8,400	10,240	12,300	14,620	17,200	20,040	-	-	-		
KX-R101CV+ RCR-R101SV	kW				5.7	7.3	9.4	11.6	14.1	16.9	19.7	22.9	26.4	-	-	-		
	kcal/hr				4,930	6,290	8,070	10,010	12,100	14,510	16,940	19,690	22,690	-	-	-		
KX-R161CV+ RCR-R161SVx2	kW				70(INV) + 60(NON-INV)	9.1	11.6	14.5	17.9	21.7	25.9	30.7	35.8	41.4	-	-	-	
	kcal/hr				7,830	9,980	12,470	15,400	18,660	22,270	26,400	30,790	35,600	-	-	-		
KX-R201CV+ RCR-R201SVx2	kW			75(INV) + 60(NON-INV)	11.4	14.0	17.2	21.0	25.5	30.4	36.1	41.9	49.0	-	-	-		
	kcal/hr			9,800	12,040	14,790	18,060	21,930	26,140	31,050	36,030	42,140	-	-	-			
KX-R81CHV+ RCR-R81SHV	kW			60	-	-	-	-	-	13.7	16.2	19.1	22.3	25.3	28.5	31.7		
	kcal/hr			-	-	-	-	-	-	11,790	13,940	16,430	19,180	21,760	24,510	27,270		
KX-R101CHV+ RCR-R101SHV	kW			65	-	-	-	-	-	14.8	17.6	20.7	24.1	27.5	30.9	34.4		
	kcal/hr			-	-	-	-	-	-	12,730	15,140	17,800	20,730	23,650	26,580	29,590		
KX-R161CHV+ RCR-R161SHVx2	kW	60(INV) + 60(NON-INV)	-	-	-	-	-	26.0	30.7	35.8	41.4	42.7	48.1	-				
	kcal/hr	-	-	-	-	-	-	22,350	26,390	30,780	35,590	36,710	41,350	-				
KX-R201CHV+ RCR-R201SHVx2	kW	65(INV) + 60(NON-INV)	-	-	-	-	-	30.4	36.1	42.2	47.2	49.0	53.2	-				
	kcal/hr	-	-	-	-	-	-	26,150	31,030	36,320	40,550	42,150	45,750	-				

Notice : This table is based on these conditions

- Suction Temperature of Compressor 18°C
- R404A Refrigerant

Adjustment capacity value superheat (TsSH) when suction temperature is 18°C

Evaporating Temp. °C Superheat (tsSH)	-45	-40	-35	-30	-25	-20	-15	-10	-5	0	5	10
10deg	84.9	86.3	87.7	89.2	90.3	91.5	93.1	94.5	96.1	97.8	99.2	100.0(*)
15deg	86.3	87.8	89.1	90.7	91.8	92.9	94.7	96.3	97.6	99.0	-	-
20deg	87.8	89.2	90.7	92.1	93.3	94.4	96.2	97.7	99.2	-	-	-
25deg	89.3	90.7	92.1	93.5	94.8	95.9	97.7	99.1	-	-	-	-
30deg	90.7	92.2	93.6	95.0	96.2	97.4	99.2	-	-	-	-	-

Remark: This table is built for R404A with the outdoor temperature is 32°C

(*) Because the maximum suction temperature 18°C, so the setting of the superheat is 8°C when the evaporating temperature is 10°C

[Reference] The relationship between suction superheat(TsSH) and actual suction temperature.

Evaporating Temp. °C Superheat (tsSH)	-45	-40	-35	-30	-25	-20	-15	-10	-5	0	5	10
10deg	-35	-30	-25	-20	-15	-10	-5	0	5	10	15	18(*)
15deg	-30	-25	-20	-15	-10	-5	0	5	10	15	-	-
20deg	-25	-20	-15	-10	-5	0	5	10	15	-	-	-
25deg	-20	-15	-10	-5	0	5	10	15	-	-	-	-
30deg	-15	-10	-5	0	5	10	15	-	-	-	-	-

Remark: This table is built for R404A with the outdoor temperature is 32°C

(*) Because the maximum suction temperature 18°C, so the setting of the superheat is 8°C when the evaporating temperature is 10°C

RC-M01XT

COMMUNICATION PCB
FOR INVERTER CONDENSING UNIT (OPTION)

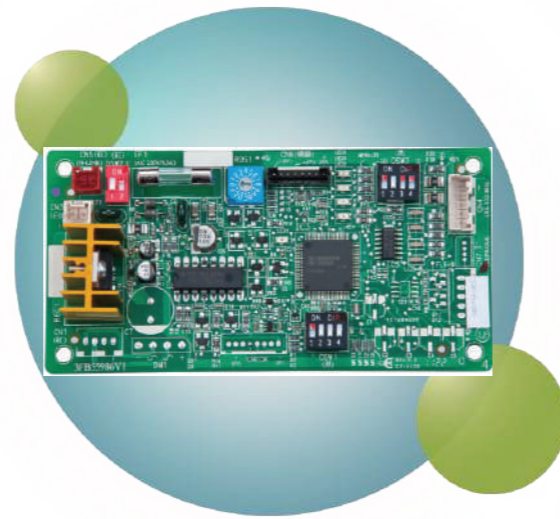
Special order, the unit needs to be revised before delivery.

APPLICABLE MODELS

All Inverter Condensing Units

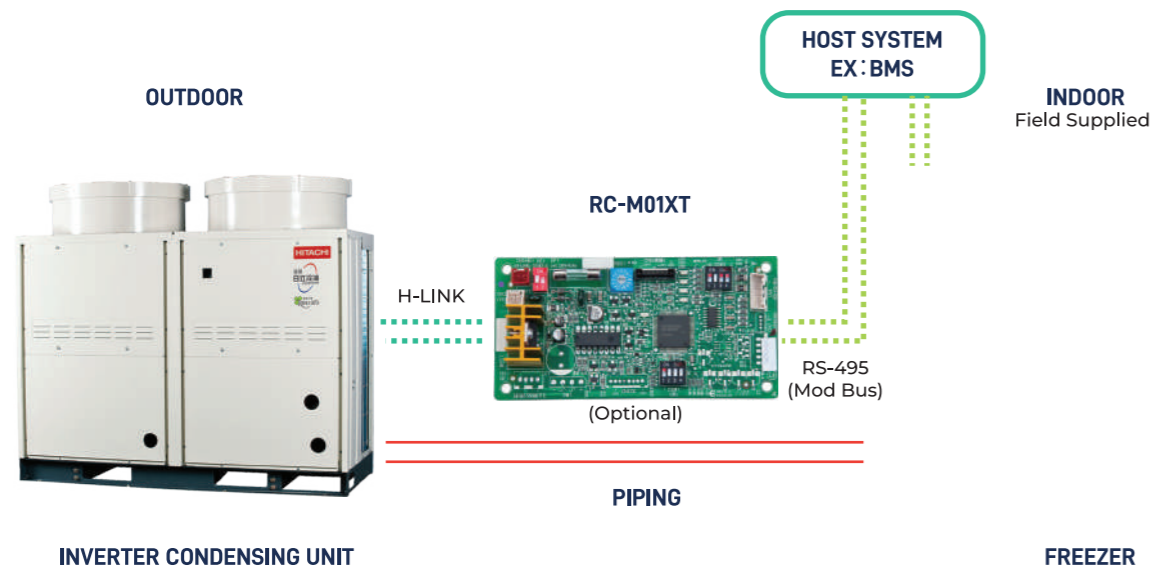
FUNCTIONS

1. Remote monitoring of operation and power saving.
2. Remote monitoring of operation pressure.
3. Alarm and service demand feedback.
4. Protocol: RS485/MODbus



Functions							
Code	Content	Monitor	Control	Code	Content	Monitor	Control
Ps	Low pressure value	○	-	Ts	Suction temperature	○	-
Pd	High pressure value	○	-	Td	Discharge temperature	○	-
PsU	Load pressure setting value	○	○	Hz	Operation frequency	○	-
PsD	Load shedding pressure setting value	○	○	Alarm	Shutdown	○	-

Connection diagram of RC-M01XT



RC-K01XT

CIRCUIT CONTROL PCB (OPTIONAL)

Special order, the unit needs to be revised before delivery.

APPLICABLE MODELS

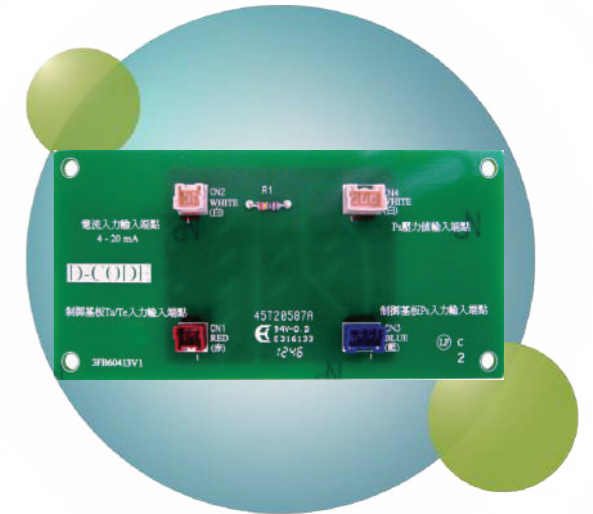
KX-RD51 AMV~KX-RD71 AMV
KX-R81 A(H)V \ KX-R101A(H)V
KX-RD31AV \ KX-RD51AV
KX-R81CV \ KX-R101CV
KX-R81CHV \ KX-R101CHV

FUNCTIONS

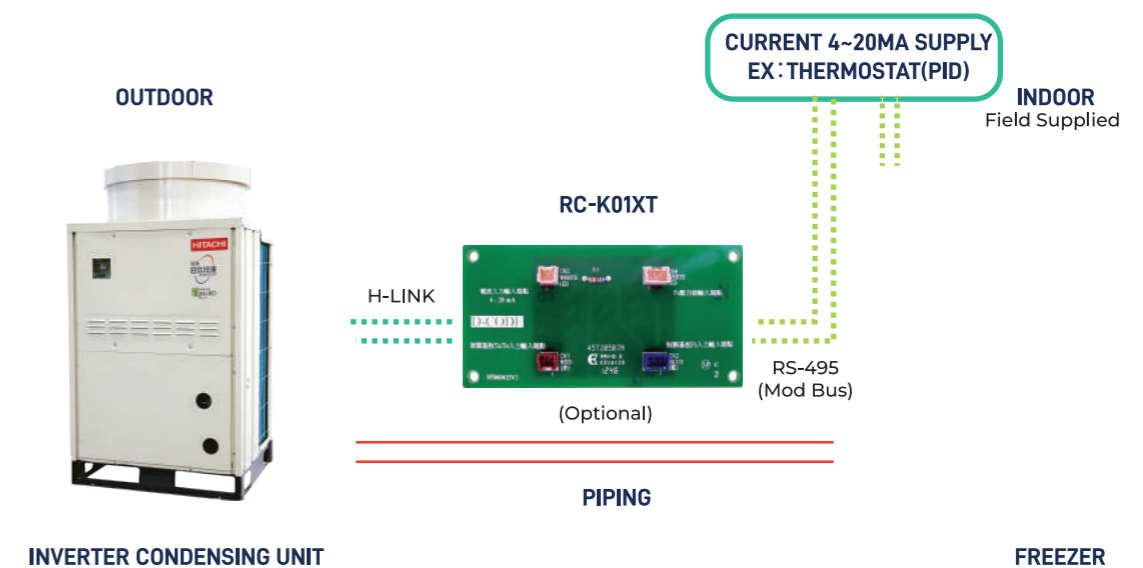
After installing this PCB, the method of frequency control will change from being dependent on suction pressure control to being dependent on current control, with a value ranging between 2 to 40mA.

PRESSURE SETTINGS

If the operation frequency control is done by this PCB, the value setting of maximum pressure and minimum pressure is unavailable. Only the shutdown pressure (A) can be set.



Connection diagram of RC-K01XT



True
to Your Comfort ♡

MANILA OFFICE: TEL.: (02) 8362-4847 FAX: (02) 8362-1769 SERVICE: (02) 8362-3842
CEBU OFFICE: TEL.: (032) 232-6634 FAX: (032) 231-7533 SERVICE: (032) 232-8831
DAVAO OFFICE: TEL.: (082) 222-2200 FAX: (082) 222-3982



HITACHI
Air conditioning solutions