

HITACHI



air



AIR-COOLED SPLIT SYSTEM



# Flexible Air Conditioning for Virtually Any Environment

By changing the mutual combination of the compartments or by remounting the fan assembly, the unit can be placed vertically or horizontally.

## HIGH PERFORMANCE EVAPORATOR



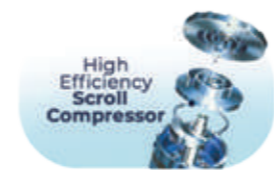
Equipped with a multi-blade centrifugal fan, the evaporator creates high static pressure and smooth airflow while using minimal power. It also features an adjustable motor pulley that covers a wide range of fan speeds.

## OTHER FEATURES:

- Evaporator Fan Bearings can be removed easily without removing the fan.
- High Performance Air Filter and Filter Box are optional.

## ADVANCED SCROLL COMPRESSOR

Hitachi's patented scroll compressor generates quick cooling, less vibrations and lower energy for virtually uninterrupted cooling operation.

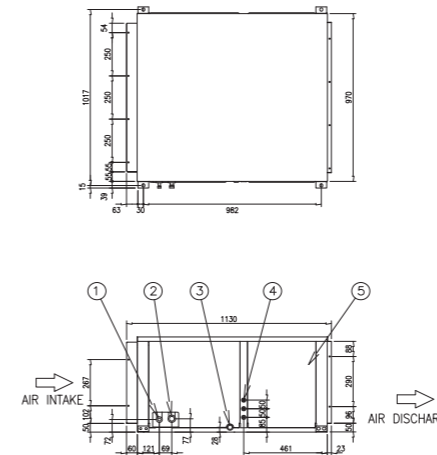


R410A has the chemical properties of being non-toxic, odorless, colorless and non-flammable so it does not damage the ozone layer. This is how Hitachi shows its genuine concern for the environment while catering to the needs of customers.

## UNIT DIMENSION (INDOOR UNIT)

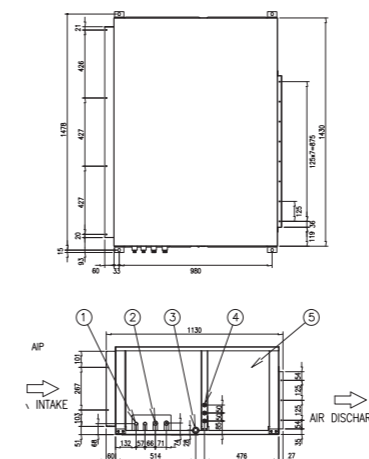
### COOLING UNITS

#### RAS-NP8US



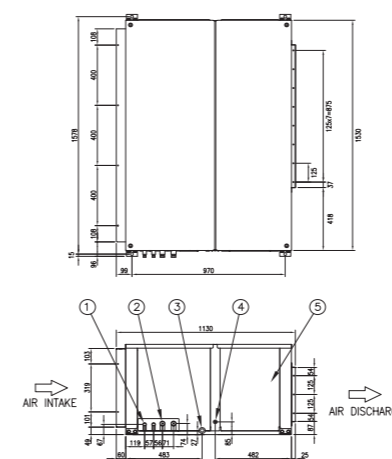
Mark	Name
1	Liquid Refrigerant Connection
2	Gas Refrigerant Connection
3	Condensate Drain Connection
4	Connection Holes for Power/ Circuit Wing
5	Service Panel for Magnetic Switch Box & Indoor Motor

#### RAS-NP10US



Mark	Name
1	Liquid Refrigerant Connection
2	Gas Refrigerant Connection
3	Condensate Drain Connection
4	Connection Holes for Power/ Circuit Wing
5	Service Panel for Magnetic Switch Box & Indoor Motor

#### RAS-NP15US

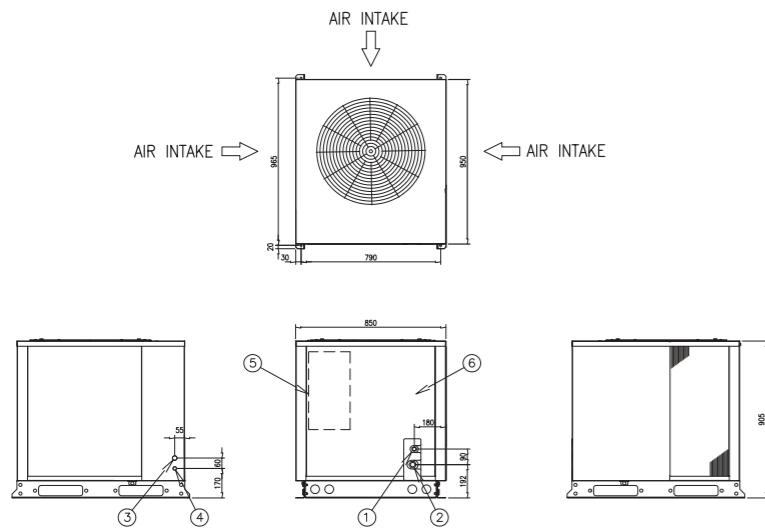


Mark	Name
1	Liquid Refrigerant Connection
2	Gas Refrigerant Connection
3	Condensate Drain Connection
4	Connection Holes for Power/ Circuit Wing
5	Service Panel for Magnetic Switch Box & Indoor Motor

## UNIT DIMENSION (OUTDOOR UNIT)

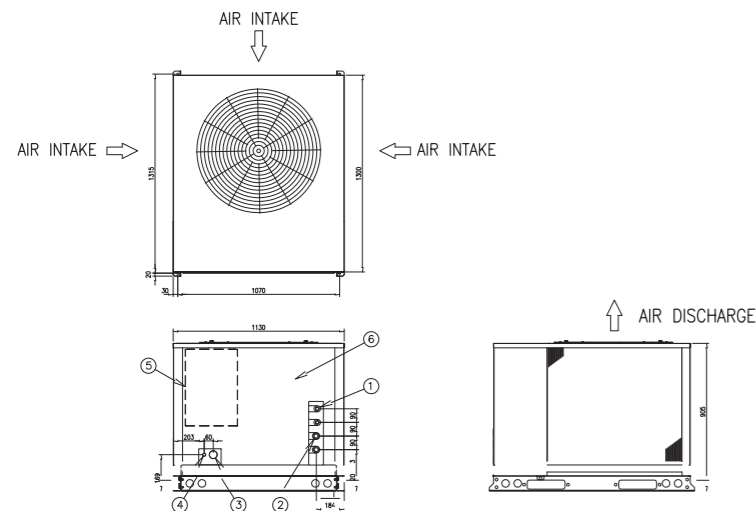
CONDENSING UNITS

### RAS-NP8CTS



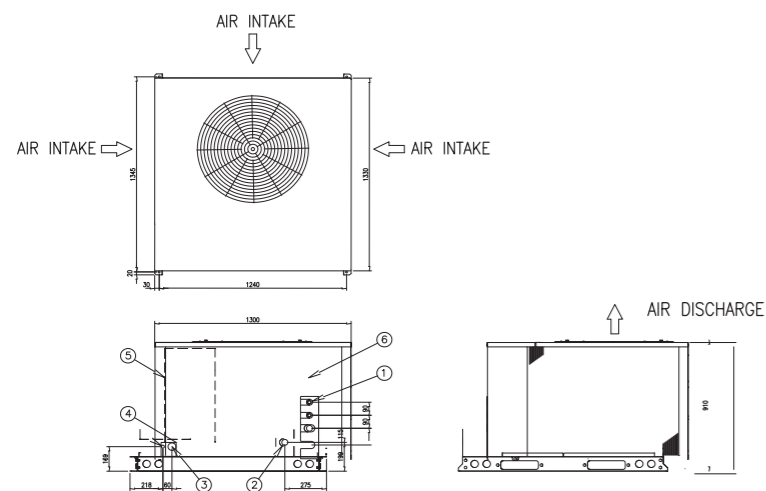
Mark	Name
1	Liquid Refrigerant Connection
2	Gas Refrigerant Connection
3	Connection Hole for Power Supply Wiring
4	Connection Hole for Operation Circuit Wiring
5	Magnetic Switch Box
6	Service Panel for Magnetic Switch Box and Compressor

### RAS-NP10CTS



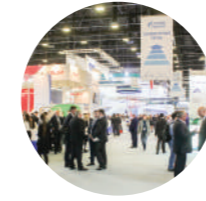
Mark	Name
1	Liquid Refrigerant Connection
2	Gas Refrigerant Connection
3	Connection Hole for Power Supply Wiring
4	Connection Hole for Operation Circuit Wiring
5	Magnetic Switch Box
6	Service Panel for Magnetic Switch Box and Compressor

### RAS-NP15CTS



Mark	Name
1	Liquid Refrigerant Connection
2	Gas Refrigerant Connection
3	Connection Hole for Power Supply Wiring
4	Connection Hole for Operation Circuit Wiring
5	Magnetic Switch Box
6	Service Panel for Magnetic Switch Box & Compressor

IDEAL FOR:



Events Places



Grocery Stores



Warehouses



Malls



Factories

## GENERAL UNIT DATA

COOLING UNIT

Model			RAS-NP8US	RAS-NP10US	RAS-NP15US	
Outer Dimension	Height	mm	550	550	600	
		in	21 2/3	21 2/3	23 5/8	
	Width	mm	1,130	1,430	1,530	
		in	44 1/2	56 2/7	60 1/4	
Depth	mm	970	1,130	1,130		
	in	38 1/5	44 1/2	44 1/2		
Net Weight	kg	130	140	165		
	lbs	287	309	364		
Evaporator	Type		Multi-Pass Cross-Finned Tube			
	Fan		Multi-Blade Centrifugal Fan (Double Suction)			
	Nominal Air Flow	m <sup>2</sup> /min	69	90	130	
		m <sup>2</sup> /s	1.15	1.5	2.17	
		L/s	1,150	1,500	2,170	
	Motor	cfm	2,440	3,180	4,590	
		kW	0.75	1.5	2.2	
hp	1	2	3			
Quantity			1	1	1	
Piping Connection	Type		Brazing Connection			
	Liquid Line Sized (O.O.)	mm	12.7	12.7	12.7	
		in	1/2	1/2	1/2	
	Quantity			1	2	2
	Type		Brazing Connection			
Gas Line Sized (O.O.)	mm	22.2	19.05	22.2		
	in	7/8	3/4	7/8		
Quantity			1	2	2	
Condensate Drain	Type		Female Piping Thread Screw			
	Size	PPT	3/4	3/4	3/4	
	Quantity			1	1	1
Wiring Hole	Type		Knockout Hole			
	Depth	mm	20	20	20	
in		25/32	25/32	25/32		
Net Weight	kg	140	150	170		
	lbs	309	331	375		
Outer Dimension	Height	mm	660	690	750	
		in	26	27 1/6	29 1/2	
	Width	mm	1,180	1,615	1,670	
		in	46 1/2	63 4/7	65 3/4	
	Depth	mm	1,020	1,180	1,180	
		in	40 1/6	46 1/2	46 1/2	
Measurements	m <sup>2</sup>	0.79	1.31	1.48		

## GENERAL UNIT DATA

### COOLING CAPACITY ACCORDING TO UNIT COMBINATION

Model	Cooling Unit		RAS-NP8US	RAS-NP10US	RAS-NP15US
	Condensing Unit		RAS-NP8CTS	RAS-NP10CTS	RAS-NP15CTS
Normal Cooling Capacity at 35 C outdoor		kcal/h	19,500	27,300	40,500
		W	22,700	31,800	47,200
		Btu/h	77,400	108,300	160,900

Model			RAS-NP8CTS	RAS-NP10CTS	RAS-NP15CTS
Capacity Control		%	100,0	100, 50, 0	100, 50, 0
Cabinet			Synthetic Resin Painted Galvanized Steel		
Color			Beige		
MUNSELL Code			2.5Y 8/2		
Outer Dimension	Height	mm	810	905	910
		in	31 8/9	35 5/8	35 5/6
	Width	mm	950	1,300	1,300
		in	37 2/5	51 1/6	51 1/6
	Depth	mm	850	1,130	1,330
		in	33 1/2	44 1/2	52 1/3
Net Weight		kg	150	220	275
		lbs	331	485	606
Refrigerant			R410A		
Flow Control			Capillary Tube		
Number of Circuits			1	2	2
Compressor	Type		Hermetic Scroll		
	Model		EB55DH	E5050H	E855DH
	Quantity		1	2	2
Condenser Fan	Type		Multi-Pass Cross-Finned Tube		
	Fan		Propeller Fan		
	Motor (60Hz)	kW	0.3	0.4	0.4
		hp	2/5	1/2	1/2
	Quantity		1	1	1
Piping Connection	Liquid Line Sized (O.O.)	mm	12.7	12.7	12.7
		in	1/2	1/2	1/2
	Type		Flare	Flare	Flare
	Quantity		1	2	2
	Gas Line Sized (O.O.)	mm	22.2	19.05	22.2
		in	7/8	3/4	7/8
Type		Flange	Flare	Flange	
Quantity		1	2	2	
Wiring Hole	Type		Knockout Hole		
	Main	mm	26	52	52
		in	11/32	2 1/16	2 1/16
Shipping Weight		kg	160	230	285
		lbs	353	507	628
Approximate Packing List	Height	mm	935	950	955
		in	36 4/5	37 2/5	37 3/5
	Width	mm	1,010	1,360	1,350
		in	39 3/4	53 1/2	53 1/7
	Depth	mm	900	1,180	1,390
		in	35 3/7	46 1/2	54 5/7
Measurements		m <sup>2</sup>	0.85	1.52	1.79



*True*  
to Your Comfort ♡

MANILA OFFICE: TEL.: (02) 8362-4847 FAX: (02) 8362-1769 SERVICE: (02) 8362-3842  
CEBU OFFICE: TEL.: (032) 232-6634 FAX: (032) 231-7533 SERVICE: (032) 232-8831  
DAVAO OFFICE: TEL.: (082) 222-2200 FAX: (082) 222-3982



**HITACHI**  
Air conditioning solutions